

# Fly, Dragon, Fly

Klaus Dickbauer  
(\* 1961)

$\text{♩} = 137$

**Piano Intro**

**A** C F/C C C(sus4)

13 C F/C G F Em7

**B** C F/C C C(sus4)

21 C F/C G F Em7

**C**  $\text{♩}$  C(add9) G(add9)/B Fmaj7/A

31 C<sup>13</sup>(sus4) C/F D/E Am<sup>9</sup> Am/G

**D** 35 Fmaj7 C/E

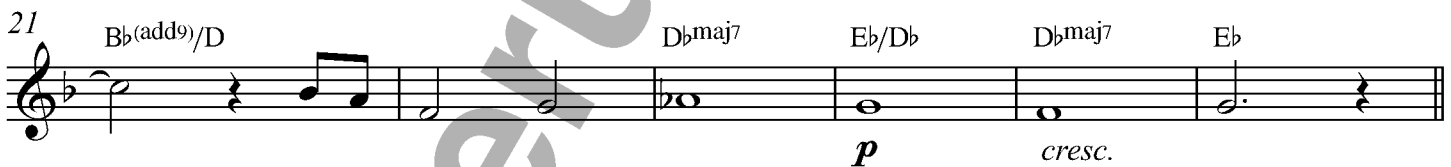
39 D<sup>9</sup> F/G

# Your Fairy Tale

Martin Gasselsberger  
(\* 1980)

$\text{♩} = 148$

Piano Intro



# The Story of the Angry Rabbit

Klaus Dickbauer

$\text{♩} = 126$  ( $\text{♩} = \text{♩}^3$ )

**Piano Intro**

**A**  $G^5$   $C^5$   $D^5$   $G^5$

8  $E_b^5$   $F^5$   $F^{\#5}$   $G^5$  N.C.  $E$   $A^7$   $D$   $E_b^\circ$   $Em$   $A^{(sus4)}$

13  $Am^7$   $G/B$   $C^{(add9)}$   $F^7$   $G^5$  **B**  $C^5$   $D^5$   $G^5$

18  $E_b^5$   $F^5$   $F^{\#5}$   $G^5$  N.C.  $E$   $A^7$   $D$   $E_b^\circ$   $Em$   $A^{(sus4)}$   $Am^7$

**C**

23  $G/B$   $C^{(add9)}$   $F^7$   $G^5$   $A^7(sus4)/E$   $A^{(sus4)}$   $A^{(sus4)}/E$   $A^{(sus4)}$   $A^{(sus4)}/E$   $G/A$

28  $G/A$   $F^{\#7}/C^{\#}$   $F^{\#9}$   $F^{\#7}/C^{\#}$   $F^{\#9}$   $E/F^{\#}$

33  $Am^9$   $F^{maj7}$   $Am^9$   $F^{maj7}$   $F^{\#m7}(b5)$   $B^7alt.$   $Em^7$   $A^7$   $Bbm^7/E_b$   $D^7alt.$   $G^5$

39 **D** repeat ad lib.  $G^5$

43 Fine on cue

# What a Zappy Walk

Martin Gasselsberger

$\text{♩} = 130$

**Piano Intro**

**A**  $G^7$   $C^9$   $G^7$   $E7(\#9)$   $A^7(b9)$   $C/D$   $G$

**8**  $D^7(sus4)$   $G^7$   $C^9$   $G^7$   $E7(\#9)$   $Am^7$   $C/D$   $G$  **N.C.**

**13** **B**  $G^7$   $C^7$   $G^7$   $E7(\#9)$   $A^7(b9)$   $C/D$   $G$   $D^7(sus4)$

**17**  $G^7$   $C^9$   $G^7$   $E7(\#9)$   $Am^7$   $C/D$   $G$

**21** **C**  $E_b$   $F$   $G$   $Am/G$   $G$

**25**  $E_b$   $F$   $E_b/G$   $Am^{11}$   $G/B$   $C(add9)$   $D^7(sus4)$   $D/E$

*cresc.* **f**

**29** **D**  $A^7$   $D^7$   $A^7$   $F\#7(\#9)$   $B^7(b9)$   $D/E$   $A$   $E7(sus4)$

**33**  $A^7$   $D^9$   $A^7$   $F\#7(\#9)$   $Bm^7$   $D/E$  **Fine**  $A$

**37** **E**  $D^7(sus4)$   $G^7$   $C^9$   $G^7$   $E7(\#9)$   $A^7(b9)$   $C/D$   $G$

**44** **Impro ad lib.**  $D^7(sus4)$   $G^7$   $C^9$   $G^7$   $E7(\#9)$   $Am^7$   $C/D$   $G$  **end Impro**

**4**

D. S. al Fine

# Wedding Waltz

Klaus Dickbauer

$\text{♩} = \text{ca. } 85$

**A**

Piano Intro

4

D Dmaj7/F# Am<sup>11</sup>/E A7(sus4)

9 D A/C# Bm(b6) A(sus4) A7

13 D D/F# Gmaj7 Em7(b5)

17 Em7 D/F# G(add9) C7 D(sus4) D

**B**

21 Gmaj7 C#7alt. F#maj7 C7

25 F#maj7 B7alt. Bbmaj7 A7

29 D A/C# G/B D/A Gmaj7 D/F# to Coda

33 Em7 D/F# G(add9) C7 D(sus4) D

## Tricky 7

Martin Gasselsberger

$\text{♩} = 170$  **A**  
Piano Intro **A** G A G A G A G A G A G

2 *mf*

6 A G A G A G A G A G A G A G A G A G

11 **B** D Fmaj7 G A G A G

14 D Fmaj7 G E E(sus4) E **to Coda**  $\text{⊕}$

18 **Interlude** **Solo** **C** A G A

7 *mf*

29 G A G A G

34 A G A G

38 A G A G

42 D F G A G

46 D F G E(sus4) E

D. C. al Coda senza rep.

$\text{⊕}$  **Coda**

50 A G A G A G A G A

*mf*

# Hymn of a Lonely Girl

Klaus Dickbauer

♩ = 130 (♩♩ = ♩<sup>3</sup>)

4

**A** 5 Gm D+ B♭maj7 C7 D Gm D+ B♭maj7 C7 D

9 Gm Gm<sup>11</sup> D♭7(b5) C7 F7 Gm B7 C C♯maj7 D Gm

**B** 13 Gm D+ B♭ C7 D Gm D+ B♭ C D

17 Gm Gm7 C7 F7 Gm B7 C7 C♯maj7 D7 Gm

**C** 21 B♭maj7 D7(♯9) E♭maj7 A♭7(♯11) Dm7 Gm7 Cm7  
*tacet 1st time*

24 F7(♯9) B♭maj7 D7(♯9) E♭maj7 G♭maj7(♯5) E♭m **to Coda**

28 Gm<sup>11</sup>/D F♯7alt/E E♭(♯11) D7alt. Gm7 Cm7 B♭/D E♭(sus2) 1. F7(sus4) 2. F7(sus4)

**⊕ Coda** 33 Gm<sup>11</sup>/D F♯7alt/E E♭(♯11) D7alt. Gm7 Gm<sup>11</sup>/D F♯7alt/E E♭(♯11) D7alt. Gm7

37 Cm7 B♭/D E♭(sus2) F(sus4) E♭m7 D♭/F G♭ A♭7(sus4) D♭

D. S. al Coda

# Melancholia

Martin Gasselsberger

♩ = 80

Piano Intro

8

9 **A**

Em Em<sup>(b6)</sup> B<sup>7</sup>/D<sup>#</sup>

*mp*

13 Em/D A/C<sup>#</sup> B/D<sup>#</sup> Em<sup>(b6)</sup>

18 B/D<sup>#</sup> Em<sup>7</sup>/D A/C<sup>#</sup>

4

26 **B**

Bm<sup>9</sup> G/B A/C<sup>#</sup>

*mf*

30 D D/C G/B F<sup>#7</sup>/A<sup>#</sup>

34 Bm Bm<sup>9</sup> G/B Bm<sup>7</sup> G<sup>#</sup>/C

*p*



## Let the Cat In!

Klaus Dickbauer

♩ = 134

Piano Intro

8

9 A(sus4) F/G D/A F/G

13 D/A F/G D(add9)/F# Em<sup>11</sup> F#m<sup>11</sup> F/G Bb/C

17 **A** A(sus4) F/G D/A F/G

21 D/A F/G D(add9)/F# F#m<sup>11</sup> Em<sup>11</sup> F#m<sup>11</sup> F/G Bb/C N.C.

26 **B** G<sup>+</sup> D/F# C(add9)/E B(add9)/D# G/D A/C# Abmaj9/C

30 N.C. A E/G# Gmaj7 Bbmaj9 Eb(add9) Abmaj9

34 N.C.

6

42 **C** F#m7(b5) B7(b13) C/E D/F# G

46 Cmaj9 B(add9)

# Joyful Dance

Martin Gasselsberger

♩ = 154

Piano Intro

8

**A**

9 Fmaj7 Bbmaj7/F Bbm/F

13 F Em7(b5) A7(b9)

17 Dm Dm7/C G/B Bb7(#11)

21 F/A Bb/D Db Bbm/Db

**A**

25 F Bbmaj7/F Bbm

29 F Em7(b5) A7(b9)

33 Dm Dm7/C G/B Bb7(#11)

# Secret Wishes

Klaus Dickbauer

$\text{♩} = 100$

9 **A**  $\text{Dm}^7$   $\text{G}^7$   $\text{C}^{\text{maj}7}$   $\text{F}^{\text{maj}7}$  8

13  $\text{Dm}^7$   $\text{Gm}^{11}$   $\text{Cm}^7$   $\text{B}^{\text{maj}7}(\text{add}13)$

17  $\text{Gm}^7$   $\text{Cm}^7$   $\text{F}^7(\text{sus}4)$   $\text{B}^{\flat}\text{maj}^7$

21  $\text{Bm}^7$   $\text{E}^7(\text{b}9)$   $\text{Am}^7$   $\text{D}^7(\text{sus}4)$   $\text{D}^7(\text{b}9)$  to Coda

25 **B**  $\text{G}$   $\text{G}^7(\text{sus}4)$   $\text{G}(\text{add}9)$   $\text{G}^7(\text{sus}4)$   $\text{C}^{\text{maj}7}$   $\text{F}^7(\#11)$

31  $\text{Em}^7$   $\text{A}^7(\text{sus}4)$  **C**  $\text{C}(\text{add}9)$   $\text{G}^{\text{maj}7}$   $\text{C}(\text{add}9)$   $\text{G}^{\text{maj}7}$

37  $\text{C}^{\text{maj}7}$   $\text{G}$   $\text{C}^{\text{maj}7}$  1.  $\text{B}(\text{add}9)$  2.  $\text{B}(\text{add}9)$

D. S. al Coda

42 **D**  $\text{G}$   $\text{G}^7(\text{sus}4)$   $\text{G}(\text{add}9)$  3  $\text{G}^7(\text{sus}4)$   $\text{C}^{\text{maj}7}$   $\text{F}^7(\#11)$

48  $\text{Em}^7$   $\text{A}^7(\text{sus}4)$  **E**  $\text{C}(\text{add}9)$   $\text{G}^{\text{maj}7}$   $\text{C}(\text{add}9)$  3 3

# Come and Show Your Bright Side!

Martin Gasselsberger

♩ = 114

Piano Intro

4

**A**

5 D F#m7 F/Bb C6 D F#m7 F/Bb C6

*f*

9 D F#m7 F/Bb C6 D F#m7 F/Bb C6

**A**

13 D F#m7 F/Bb C6 D F#m7 F/Bb C6

*mf*

17 D F#m7 F/Bb C6 D F#m7 F/Bb C6

**B**  $\frac{8}{8}$

21 Gm9 C9(sus4) D(add9) F#m7 Gm9 Am7 Bbmaj9 C9(sus4)

25 Bb/D C/E D/F# D/A D Gm7 Am7 Bb Bb/C

*cresc.*